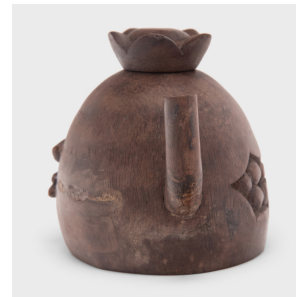
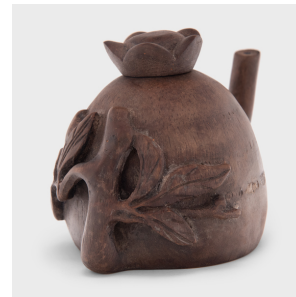
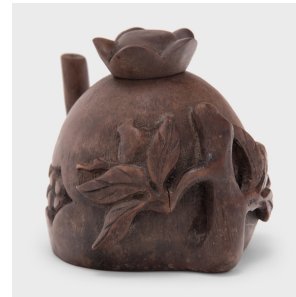

PAGODA RED



BAMBOO POMEGRANATE TEAPOT

\$380

c. 1900 • China • Bamboo • Collection #CFC483C

W: 5.0" D: 3.5" H: 3.5"

Tea drinking has been an integral part of Chinese culture for centuries, resulting in a wide range of social customs and material traditions. In addition to tea leaves, water, and heat, the art of drinking tea (chayi) calls for a variety of teaware and utensils - both practical and decorative.

This charming teapot dates to the late Qing dynasty and is hand-carved from a hollow length of bamboo in the shape of a ripe pomegranate. The handle is carved to resemble a thin branch, which forks to either side of the teapot bearing long, slender leaves. Continued...



1740 W. Webster Ave., Chicago, IL 60614 • 773-235-1188 • info@pagodared.com

PAGODARED.COM

PAGODA RED

BAMBOO POMEGRANATE TEAPOT

The teapot has a squat, rounded form and a dark brown finish, reminiscent of Yixing red clay teapots. Appealing to the popular appreciation for natural forms, the underside was left unworked, revealing the natural growth patterns of the wood.

From the collection of Frances and Gary Comer.



1740 W. Webster Ave., Chicago, IL 60614 • 773-235-1188 • info@pagodared.com

PAGODARED.COM