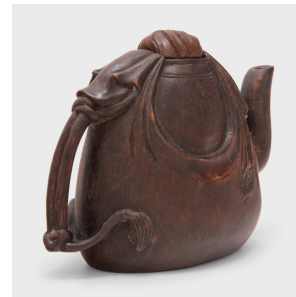
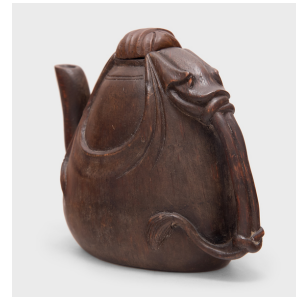

PAGODA RED



BAMBOO CLOTH TEAPOT

\$380

c. 1900 • China • Bamboo • Collection #CFC483A

W: 5.5" D: 3.25" H: 4.5"

Tea drinking has been an integral part of Chinese culture for centuries, resulting in a wide range of social customs and material traditions. In addition to tea leaves, water, and heat, the art of drinking tea (chayi) calls for a variety of teaware and utensils - both practical and decorative.

This charming teapot dates to the late Qing dynasty and is hand-carved from a hollow length of bamboo to appear as though parceled by a cloth strung with tassels. The teapot has a squat, rounded form and a dark brown finish, reminiscent of Yixing red clay teapots. Continued...



1740 W. Webster Ave., Chicago, IL 60614 • 773-235-1188 • info@pagodared.com

PAGODARED.COM

PAGODA RED

BAMBOO CLOTH TEAPOT

Appealing to the popular appreciation for natural forms, the underside was left unworked, revealing the natural growth patterns of the wood.

From the collection of Frances and Gary Comer.



1740 W. Webster Ave., Chicago, IL 60614 • 773-235-1188 • info@pagodared.com

PAGODARED.COM