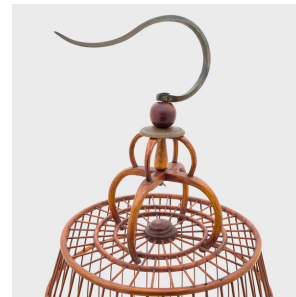
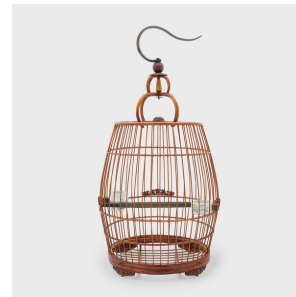
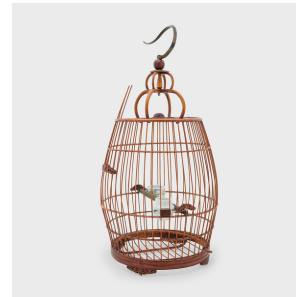


---

# PAGODA RED

---



## BARREL-FORM BAMBOO BIRDCAGE

**\$480**

c. 1900 • China • Bamboo, Porcelain, Metal • Collection #CFC542

H: 24.0" Dia: 12.25"

This large wooden birdcage was once home to the tiny pet bird of a Qing-dynasty aristocrat. Dated to the early 20th century, this barrel-form cage is carefully assembled of thin bamboo rods set within a bent bamboo frame. Small fretwork carvings decorate the cage with a scrollwork design of two dragons facing a Shou symbol medallion. The birdcage hangs from a metal hook secured to the top and has a removable round base.

The cage opens by a sliding door on one side to reveal a thick wooden perch textured with sand and grit to add traction and simulate tree bark. Continued...



1740 W. Webster Ave., Chicago, IL 60614 • 773-235-1188 • [info@pagodared.com](mailto:info@pagodared.com)

PAGODARED.COM

---

# PAGODA RED

---

## BARREL-FORM BAMBOO BIRDCAGE

Two petite porcelain cups for holding water and birdseed are affixed to either side of the cage, decorated in the style of famille rose enamelware. A fantastic collector's item, we love this large birdcage as a storied sculptural object or the new home for a feathered friend.

From the collection of Frances and Gary Comer.

Porcelain water pots and other accessories will be packaged separately during shipping.

Due to its fragility, this item is only available via white glove delivery or local pickup.

