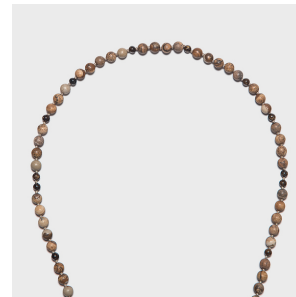
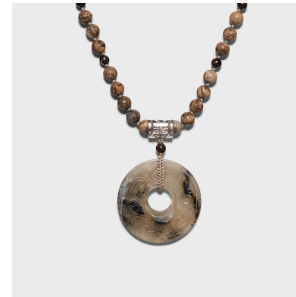

PAGODA RED



BEADED JASPER NECKLACE WITH JADE BI DISC

\$288

Shanghai, China • Stone, Jade • Collection #CJLDN404JA

H: 19.25"

Created by an artisan in Shanghai, this beautiful necklace is strung with round jasper beads ending in a silver Tibetan charm bearing a shou symbol of longevity. The central pendant is an early 20th-century jade disc etched with abstract patterns. Likely once looped over robe fastenings as a protective charm, jade ornaments such as this were thought to imbue a person with a clear mind, and to guard against evil spirits or illness.

All jewelry sales are final. No refunds or exchanges.



1740 W. Webster Ave., Chicago, IL 60614 • 773-235-1188 • info@pagodared.com

PAGODARED.COM