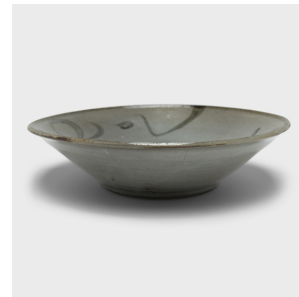
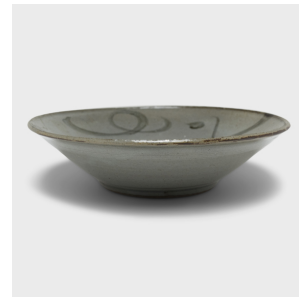
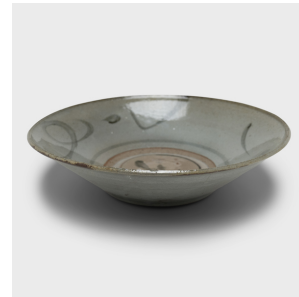


---

# PAGODA RED

---



## PROVINCIAL BLUE AND WHITE PLATE

**\$288**

c. 1850 • China • Ceramic, Glaze • Collection #CMRC086

H: 2.5" Dia: 9.25"

This mid-19th century footed stoneware plate is cloaked in a blue-grey glaze and brushed with calligraphic sweeps of dark blue, bringing life and character to its simple tapered form. Once used as an everyday serving dish, this expressive example of Chinese blue-and-white ceramics can today be used as a decorative tabletop centerpiece or serving plate.



1740 W. Webster Ave., Chicago, IL 60614 • 773-235-1188 • [info@pagodared.com](mailto:info@pagodared.com)

PAGODARED.COM