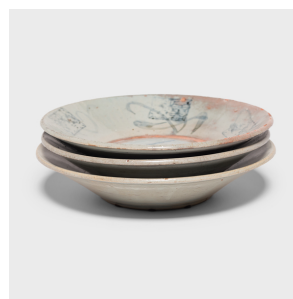


---

# PAGODA RED

---



## BLUE AND WHITE PROVINCIAL PLATE

**\$228**

c. 1900 • Northern China, China • Terra Cotta • Collection #X104D

H: 2.25" Dia: 10.25"

Calligraphic sweeps of blue bring this early 20th century footed plate to life, adorning the crazed blue-grey glaze that cloaks its terracotta form. Atop the free-form brushwork is a lattice-like pattern of coin motifs, likely applied with a stamp. Once used daily for tea, rice, and soup, this expressive example of Chinese blue and white ceramics can today be used as a decorative tabletop centerpiece.



1740 W. Webster Ave., Chicago, IL 60614 • 773-235-1188 • [info@pagodared.com](mailto:info@pagodared.com)

PAGODARED.COM