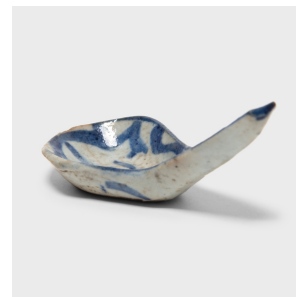
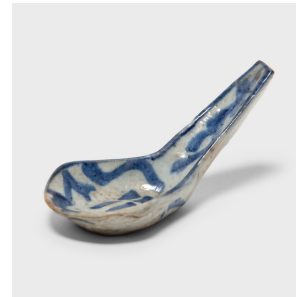


---

# PAGODA RED

---



## BLUE AND WHITE SPOON

**\$38**

c. 1850 • China • Ceramic • Collection #CBH077E

W: 3.5" D: 1.75" H: 1.75"

A delicate example of blue-and-white ceramics, this 19th-century porcelain soup spoon was likely used as an everyday eating utensil. Used in China as early as the Shang dynasty (1600 - 1046 B.C.), spoons predated chopsticks and remained the most common utensil until the 10th century. The spoon's simple form is dotted with cobalt blue glaze, elevating the functional tool to a sculptural object.



1740 W. Webster Ave., Chicago, IL 60614 • 773-235-1188 • [info@pagodared.com](mailto:info@pagodared.com)

PAGODARED.COM