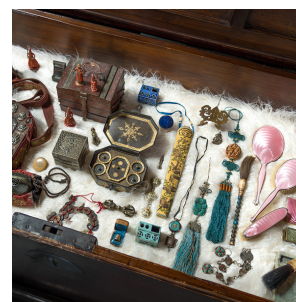

PAGODA RED



SHIITAKE MUSHROOM NETSUKE CHARM

\$380

c. 1850 • Japan • Bone • Collection #CFC623

H: 1.0" Dia: 1.75"

In 19th-century Japan, kimono-clad men compensated for the garment's lack of pockets by wearing small pouches secured by button-like fasteners known as netsuke. Although these tiny, fob-like objects had a practical purpose, they were exquisitely crafted of a wide range of materials and became fashionable as treasured accessories. This carved bone netsuke was shaped to the simple form of a shiitake mushroom, a symbol of longevity. Decorated only by an aged patina and the gorgeous speckled patterning of the bone, this shiitake netsuke lives on as a delightful storied object. Continued...



1740 W. Webster Ave., Chicago, IL 60614 • 773-235-1188 • info@pagodared.com

PAGODARED.COM

PAGODA RED

SHIITAKE MUSHROOM NETSUKE CHARM

From the collection of Frances and Gary Comer.



1740 W. Webster Ave., Chicago, IL 60614 • 773-235-1188 • info@pagodared.com

PAGODARED.COM