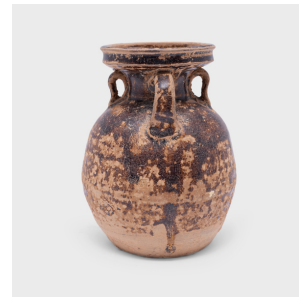
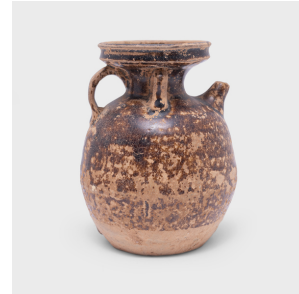

PAGODA RED



BROWN GLAZED WATER EWER

\$228

c. 1850 • China • Ceramic • Collection #CESB034

W: 4.0" D: 4.0" H: 5.25"

Tea drinking has been an integral part of Chinese culture for centuries, resulting in a wide range of social customs and material traditions. In addition to tea leaves, water, and heat, the art of drinking tea (chayi) calls for a variety of teaware and utensils - both practical and decorative.

This petite terracotta ewer dates to the 19th century and would have been used during tea ceremony to carefully pour hot water over tea and to rinse tea bowls. The ewer is shaped with a rounded body and a broad, flared neck with a well-defined rim. A short spout sits atop the high shoulders, along with three strap handles that link to the wide neck.

Continued...



1740 W. Webster Ave., Chicago, IL 60614 • 773-235-1188 • info@pagodared.com

PAGODARED.COM

PAGODA RED

BROWN GLAZED WATER EWER

A thin, dark-brown glaze coats the vessel inside and out with finely crazed texture.

Minor chip to spout. Significant losses to glazed finish.

