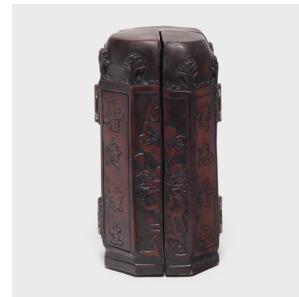

PAGODA RED



BUDDHIST TRAVELING SHRINE

\$380

c. 1850 • China • Wood, Lacquer • Collection #CMCL045

H: 6.5" Dia: 3.5"

The hinged doors of this petite traveling shrine open to reveal the seated Buddha Shakyamuni surrounded by minor Bodhisattvas and reverent monks. Seated upon a lotus base draped with fabric, the Buddha sits in quiet contemplation with hands in the abhaya mudra, a gesture of comfort, blessing, and protection. This posture signifies fearlessness and encourages those before him to not be afraid.

Made in the 19th century of carved lacquer and wood, this petite shrine was likely acquired by a Buddhist follower on a religious pilgrimage. Devotees would often take shrines such as this back to their homes as mementos or donate them to a temple as an expression of religious devotion. Continued...



1740 W. Webster Ave., Chicago, IL 60614 • 773-235-1188 • info@pagodared.com

PAGODARED.COM

PAGODA RED

BUDDHIST TRAVELING SHRINE

Additional Dimensions:

With Doors Open: 7.



1740 W. Webster Ave., Chicago, IL 60614 • 773-235-1188 • info@pagodared.com

PAGODARED.COM