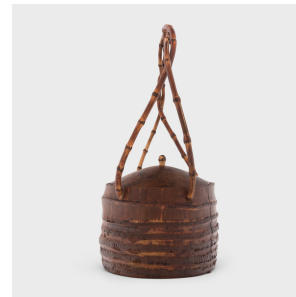
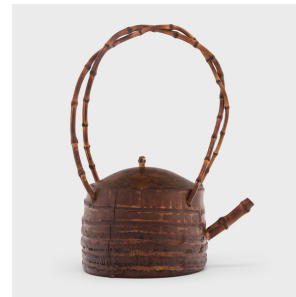
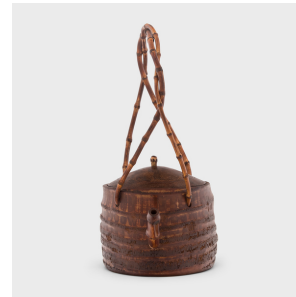


---

# PAGODA RED

---



## BAMBOO TEAPOT WITH ARCHED HANDLE

**\$980**

c. 1900 • China • Bamboo • Collection #CFC521A

W: 10.0" D: 6.5" H: 14.5"

Tea drinking has been an integral part of Chinese culture for centuries, resulting in a wide range of social customs and material traditions. In addition to tea leaves, water, and heat, the art of drinking tea (chayi) calls for a variety of teaware and utensils - both practical and decorative.

This sculptural teapot dates to the late Qing dynasty and crafted entirely of bamboo. A tall bent handle surmounts the teapot, shaped from two thin bamboo branches twisted together. Continued...



1740 W. Webster Ave., Chicago, IL 60614 • 773-235-1188 • [info@pagodared.com](mailto:info@pagodared.com)

PAGODARED.COM

---

# PAGODA RED

---

## BAMBOO TEAPOT WITH ARCHED HANDLE

Appealing to the popular appreciation for organic forms, the body of the teapot was minimally worked, preserving the natural patterning of the wood grain.

