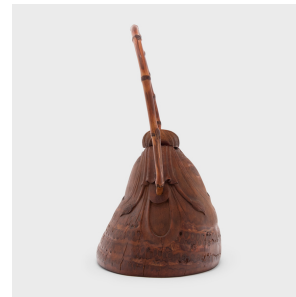
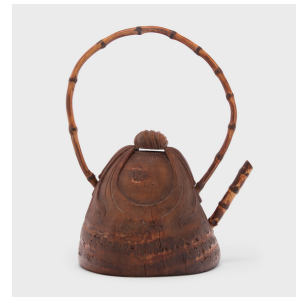
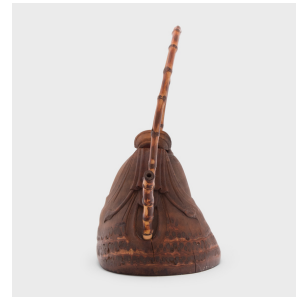


---

# PAGODA RED

---



## BAMBOO CLOTH TEAPOT WITH ARCHED HANDLE

**\$980**

c. 1900 • China • Bamboo • Collection #CFC521C

W: 10.0" D: 6.5" H: 13.0"

Tea drinking has been an integral part of Chinese culture for centuries, resulting in a wide range of social customs and material traditions. In addition to tea leaves, water, and heat, the art of drinking tea (chayi) calls for a variety of teaware and utensils - both practical and decorative.

This sculptural teapot dates to the late Qing dynasty and was hand-carved from bamboo to appear as though parceled by a cloth strung with tassels. A tall, arched handle surmounts the teapot, shaped from a thin bamboo branch. Appealing to the popular appreciation for organic forms, the base of the teapot was minimally worked, preserving the natural patterning of the wood grain. Continued...



1740 W. Webster Ave., Chicago, IL 60614 • 773-235-1188 • [info@pagodared.com](mailto:info@pagodared.com)

PAGODARED.COM

---

# PAGODA RED

---

## BAMBOO CLOTH TEAPOT WITH ARCHED HANDLE

From the collection of Frances and Gary Comer.



1740 W. Webster Ave., Chicago, IL 60614 • 773-235-1188 • [info@pagodared.com](mailto:info@pagodared.com)

PAGODARED.COM