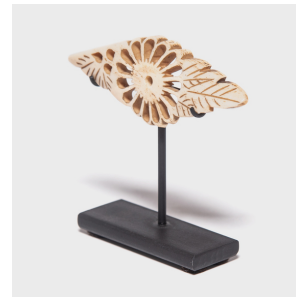

PAGODA RED



ETERNAL LIFE NETSUKE CHARM

\$288

c. 1900 • Japan • Bone • Collection #AA014

W: 1.0" D: 3.5" H: 3.0"

Japanese artisans have long held mastery in the creation of miniature treasures, or netsuke. Carved from bone, this leaf with a central chrysanthemum medallion would have been a waist charm intended to bring comfort and luck.

Chrysanthemums blossom during autumn time and last longer than most, even through frost, so are held as traditional symbols of longevity. It is mounted on a custom steel stand.



1740 W. Webster Ave., Chicago, IL 60614 • 773-235-1188 • info@pagodared.com

PAGODARED.COM