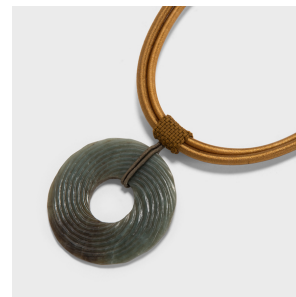
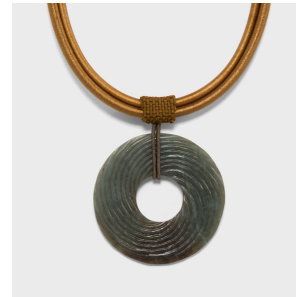

PAGODA RED



JADE BI DISC NECKLACE WITH GOLD CORD

\$275

Shanghai, China • Jade • Collection #CJLDN460SZ

W: 4.75" D: 0.25" H: 10.25"

Created by artisans in Shanghai, this beautiful statement necklace features an early 20th-century jade pendant, likely once looped over robe fastenings as a decorative charm. Valued for its rarity and lustrous appearance, jade has been thought to symbolize excellence and purity of human virtue. Worn as jewelry or as a protective charm, the stone was thought to imbue a person with a clear mind and pure spirit, and to guard against evil spirits or illness. This jade charm is carved in the form of a bi disc, a symbol connected with heaven and its spiritual properties. Strung with intricately hand-knotted cord, this dark green jade bi disc becomes a striking piece of contemporary jewelry. Continued...



1740 W. Webster Ave., Chicago, IL 60614 • 773-235-1188 • info@pagodared.com

PAGODARED.COM

**PAGODA
RED**

JADE BI DISC NECKLACE WITH GOLD CORD

All jewelry sales are final. No refunds or exchanges.

Additional Dimensions:

Diameter of Disc: 2.



1740 W. Webster Ave., Chicago, IL 60614 • 773-235-1188 • info@pagodared.com

PAGODARED.COM