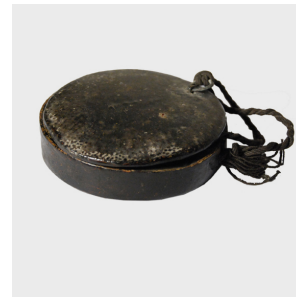

PAGODA RED



PAIR OF EYEGASSES WITH ORIGINAL CASE

\$320

c. 1900 • Northern China, China • Wood, Brass • Collection #KK170A

W: 2.5" D: 1.25" H: 0.5"

These hand-made brass glasses from northern China were fashionable in elite circles around the turn of the 20th century, as Western fashions increased in popularity. Historians note that scholars in China had been using spectacles for centuries. The larger the glasses, the more intelligent the wearer was thought to be. This pair remains with its original case, made of carved wood with a simple latch.



1740 W. Webster Ave., Chicago, IL 60614 • 773-235-1188 • info@pagodared.com

PAGODARED.COM