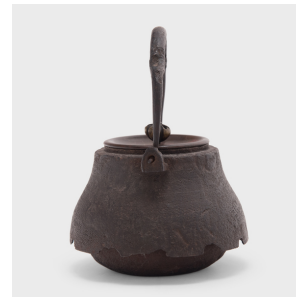
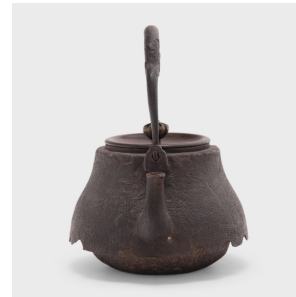


---

# PAGODA RED

---



## JAPANESE TETSUBIN WITH WOVEN TEXTURE

**\$980**

c. 1900 • Japan • Bronze, Cast Iron • Collection #CFC131

W: 7.5" D: 5.0" H: 5.5"

Decorated with an irregular, textured surface, this Japanese teapot was used to boil water for traditional tea ceremonies. Known as tetsubin, the kettle's cast-iron construction is said to change the quality of the water, making tea taste mellow and sweet. This tetsubin is cast with a crenelated "skirt" and the rustic texture of woven cloth, in pleasing contrast to its gracefully arched handle and fine bronze lid. The underside of the lid is signed by the maker in elegant script.



1740 W. Webster Ave., Chicago, IL 60614 • 773-235-1188 • [info@pagodared.com](mailto:info@pagodared.com)

PAGODARED.COM