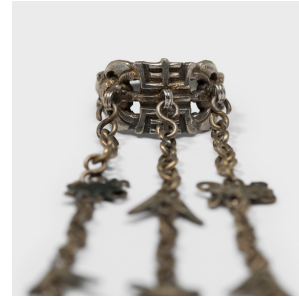


---

# PAGODA RED

---



## LONGEVITY CHARM RING

**\$88**

c. 1900 • China • Silver • Collection #LUBRING\_O

W: 1.25" D: 0.75" H: 4.0"

Dated to the late 19th century, this silver charm ring was believed to protect the wearer from bad luck and malevolent spirits. The ring is decorated with intricate florals and the Shou (壽) character for longevity. Three thin chains hang from the face of the ring, each strung small scholars' object charms, including ribbon-clad scrolls and precious ingots.

Ring band is adjustable. All jewelry sales are final. No refunds or exchanges.



1740 W. Webster Ave., Chicago, IL 60614 • 773-235-1188 • [info@pagodared.com](mailto:info@pagodared.com)

PAGODARED.COM