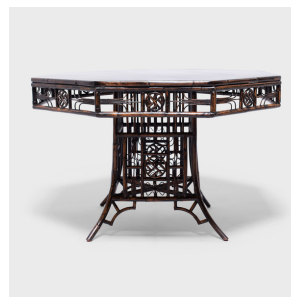

PAGODA RED



EIGHT-SIDED BAMBOO CENTER TABLE

\$3,280

Early 20th Century • China • Bamboo, Lacquer • Collection #CMPZ009

H: 30.0" Dia: 44.0"

This fantastic eight-sided table dates to the early 20th century and is entirely crafted of bamboo that has been steamed and bent into elaborate geometric forms. The table is elevated by a square pedestal base with highly patterned sides and flared legs. The octagonal table top is comprised of flattened bamboo and finished with an even layer of black lacquer. A light coating of black lacquer darkens the rest of the frame, lightly worn for a weathered appearance.



1740 W. Webster Ave., Chicago, IL 60614 • 773-235-1188 • info@pagodared.com

PAGODARED.COM

**PAGODA
RED**

EIGHT-SIDED BAMBOO CENTER TABLE

Additional Dimensions:

Table Apron to Floor: 24"H



1740 W. Webster Ave., Chicago, IL 60614 • 773-235-1188 • info@pagodared.com

PAGODARED.COM