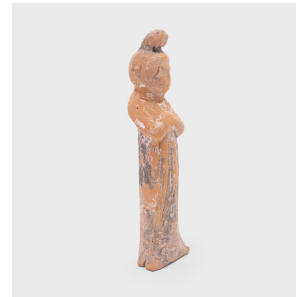

PAGODA RED



FEMALE MINGQI SPIRIT ATTENDANT

\$480

China • Ceramic • Collection #CESB041

W: 2.25" D: 1.75" H: 8.0"

Molded of earthenware, this petite sculpture is a type of centuries-old burial figurine known as *míngqì*. Such model figures were placed in tombs of individuals with high status to ensure a safe journey to the afterlife. Meant to depict the pleasures of daily life, common burial figures were warriors, dancers, male and female figures and animals. This *míngqì* is of a court lady wearing a flowing robe and her hair in a high bun, one of the typical hairstyles popular during the Tang dynasty. The sculpture is coated with a pale glaze and has now weathered from age, revealing the original ceramic form. Continued...



1740 W. Webster Ave., Chicago, IL 60614 • 773-235-1188 • info@pagodared.com

PAGODARED.COM

PAGODA RED

FEMALE MINGQI SPIRIT ATTENDANT

The figure's head has broken off and has been re-adhered.



1740 W. Webster Ave., Chicago, IL 60614 • 773-235-1188 • info@pagodared.com

PAGODARED.COM