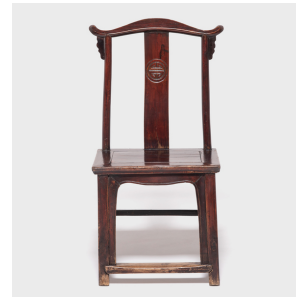

PAGODA RED



CHINESE EMPEROR CHAIR

\$980

c. 1850 • Shanxi, China • Northern Elmwood, Lacquer • Collection #CNB002

W: 23.0" D: 16.5" H: 42.25"

Rooted in ancient imperial courts and reinvigorated during the Ming dynasty, the emperor chair is also known as an “official’s hat chair” for the shape of the sculpted crest rail that resembles a winged hat. Crafted with dynamic lines and subtle curves, this mid-19th century elmwood chair strikes the perfect balance between simplicity of form and judicious ornamentation. Once taking pride of place in a Qing-dynasty living room and study, the chair has a formal quality that feels timeless, exuding dignity and poise in any setting.



1740 W. Webster Ave., Chicago, IL 60614 • 773-235-1188 • info@pagodared.com

PAGODARED.COM