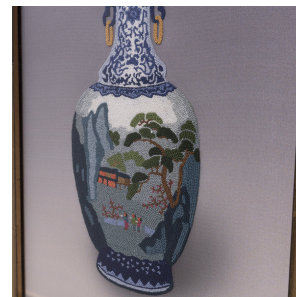
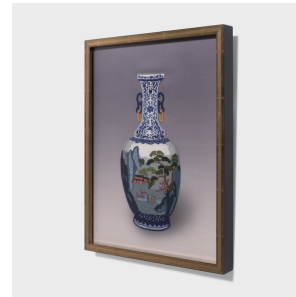

PAGODA RED



FORBIDDEN STITCH EMBROIDERY OF A SHAN SHUI VASE

\$480

Beijing, China • Silk • Collection #CJKA030B

W: 12.25" D: 0.5" H: 16.25"

A wonderful example of Chinese embroidery, this framed silk textile uses the infamous forbidden stitch to depict a fine blue-and-white porcelain vase. Also known as the "Peking knot" or "seed stitch," the forbidden knot is a silk embroidery method that results in minuscule, pearl-like knots, usually densely clustered to cover a fabric with color. This intricately stitched vase is depicted with painted decoration of a scenic mountain landscape on its rounded body, a classic painting form known as "shan shui. Continued...



1740 W. Webster Ave., Chicago, IL 60614 • 773-235-1188 • info@pagodared.com

PAGODARED.COM

PAGODA RED

FORBIDDEN STITCH EMBROIDERY OF A SHAN SHUI VASE

" An all-over pattern of florals and trailing vines decorates the narrow neck in the blue-and-white style.



1740 W. Webster Ave., Chicago, IL 60614 • 773-235-1188 • info@pagodared.com

PAGODARED.COM