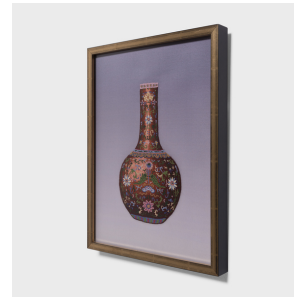

PAGODA RED



FORBIDDEN STITCH EMBROIDERY OF A FAMILLE ROSE VASE

\$480

Beijing, China • Silk • Collection #CJKA030C

W: 12.25" D: 0.5" H: 16.25"

A wonderful example of Chinese embroidery, this framed silk textile uses the infamous forbidden stitch to depict a fine famille rose porcelain vase. Also known as the "Peking knot" or "seed stitch," the forbidden knot is a silk embroidery method that results in minuscule, pearl-like knots, usually densely clustered to cover a fabric with color.

The vase pictured on this textile is a classic form known as 'tianqiuping' or 'celestial ball vase,' defined by its rounded, globular body and a narrow cylindrical neck. Continued...



1740 W. Webster Ave., Chicago, IL 60614 • 773-235-1188 • info@pagodared.com

PAGODARED.COM

PAGODA RED

FORBIDDEN STITCH EMBROIDERY OF A FAMILLE ROSE VASE

The intricately stitched decoration imitates famille rose enamelware with an all-over pattern of chrysanthemums and trailing vines against an oxblood-red field. At the center is a double fish motif, one of the Eight Auspicious Symbols of the Buddha representing freedom without restraint.

