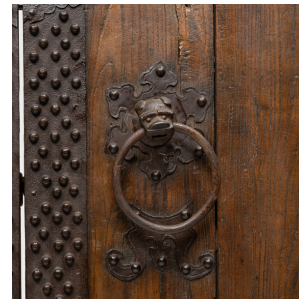
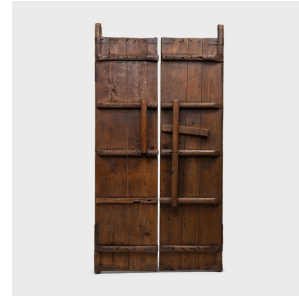

PAGODA RED



PAIR OF IRON BOUND COURTYARD DOORS

\$6,980

c. 1850 • Northern China, China • Northern Elmwood, Iron • Collection #CDTS001

W: 51.0" D: 5.0" H: 100.0"

This impressive set of doors dates to the mid-19th century and originated as the outermost entrance gate to a traditional Qing dynasty courtyard home. Crafted of Northern elmwood (yumu) and hand-worked iron, this rustic door has developed a rich patina from years of use, enhancing the wood grain and imparting a smooth texture. The door fronts are reinforced with studded iron bands and decorative iron plates in the shape of ruyi symbols. Continued...



1740 W. Webster Ave., Chicago, IL 60614 • 773-235-1188 • info@pagodared.com

PAGODARED.COM

PAGODA RED

PAIR OF IRON BOUND COURTYARD DOORS

Originally a Daoist symbol from ancient Chinese mythology, the ruyi is an auspicious symbol that references the lingzhi fungus, also known as reishi, a mushroom with magical properties thought to ensure immortality. Circular iron handles dangle from the mouths of fu lion dogs (shizi), mythical creatures believed to be benevolent protectors and are traditionally placed at the thresholds of sacred spaces, such as homes, temples, and tombs.

