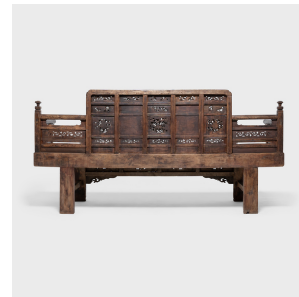


---

# PAGODA RED

---



## ORNATELY CARVED LUOHAN BED

**\$14,800**

c. 1550 • China • Northern Elmwood • Collection #CMCL058

W: 87.0" D: 24.0" H: 43.0"

This gorgeous luohan daybed anchors its surroundings with its monumental scale and incredible carved decoration. Known as a luohan chuang, or couch bed, this form of low-backed daybed emerged during the Yuan dynasty (1279-1368) and was used as a surface for reclining, playing games, and gathering for food and drink.

This elaborate luohan dates to the late Ming dynasty and is expertly crafted of northern elm (yumu) with mortise-and-tenon joinery methods, without the use of nails or screws. Thick wooden beams comprise the slatted top, enclosed by a paneled railing inset with scrolled fretwork and panels carved in high relief. Continued...



1740 W. Webster Ave., Chicago, IL 60614 • 773-235-1188 • [info@pagodared.com](mailto:info@pagodared.com)

PAGODARED.COM

---

# PAGODA RED

---

## ORNATELY CARVED LUOHAN BED

Among the carvings are two mythical qilin, benevolent creatures thought to be good omens and potent symbols of joy, longevity, prosperity, and wisdom. The luohan's unfinished surface has aged beautifully from centuries of use, darkened by a rich patina and smooth to the touch.

Deaccessioned from the MacLean Collection of Asian Art.



1740 W. Webster Ave., Chicago, IL 60614 • 773-235-1188 • [info@pagodared.com](mailto:info@pagodared.com)

PAGODARED.COM