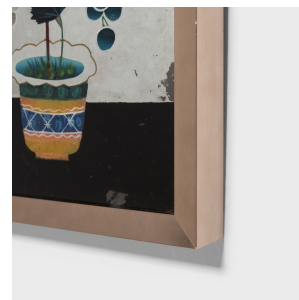
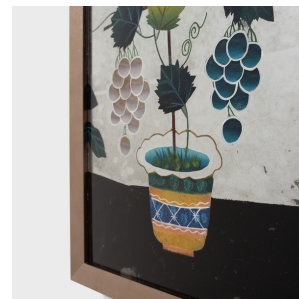

PAGODA RED



REVERSE GLASS GRAPEVINE STILL LIFE

\$480

c. 1900 • China • Paint, Metal, Glass • Collection #CJKA029D

W: 10.25" D: 1.5" H: 14.25"

This colorful floral still life is a charming example of Chinese reverse glass painting. Popularized during the Qing dynasty, reverse glass painting requires an artist to essentially work backwards, starting with details and shading before adding color and form. Lending the finished work a subtle three-dimensional effect, this exacting technique doesn't allow for any corrections, and is only revealed to its full effect when the glass pane is turned around.

This example dates to the early 20th century and depicts a fruit-laden grapevine growing out of a porcelain planter. Continued...



1740 W. Webster Ave., Chicago, IL 60614 • 773-235-1188 • info@pagodared.com

PAGODARED.COM

PAGODA RED

REVERSE GLASS GRAPEVINE STILL LIFE

A butterfly flits overhead, a symbol of happiness and longevity. The scene is contrasted by a mirrored background and set within an updated silvery frame.



1740 W. Webster Ave., Chicago, IL 60614 • 773-235-1188 • info@pagodared.com

PAGODARED.COM