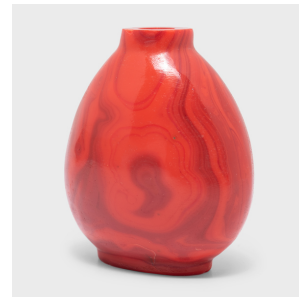
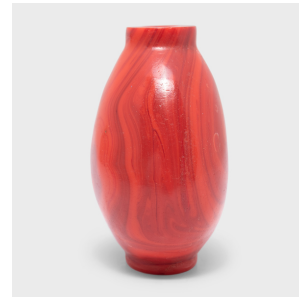


---

# PAGODA RED

---



## RED GLASS SNUFF BOTTLE

**\$128**

20th Century • China • Glass • Collection #CESB056

W: 2.0" D: 1.25" H: 2.25"

A mixture of finely powdered tobacco, herbs, and spices, snuff was introduced to China in the 17th century by Western diplomats. Initially reserved for ranking members of Qing-dynasty society, the practice provided an opportunity to display one's refined aesthetic through collectible snuff bottles.

Made to resemble banded agate, this marbled glass snuff bottle is patterned with swirling currents of bright crimson and dark red. The bottle has a simple, bulbous shape with tapered shoulders and a low footed base. The original cap and snuff spoon have been lost.



1740 W. Webster Ave., Chicago, IL 60614 • 773-235-1188 • [info@pagodared.com](mailto:info@pagodared.com)

PAGODARED.COM