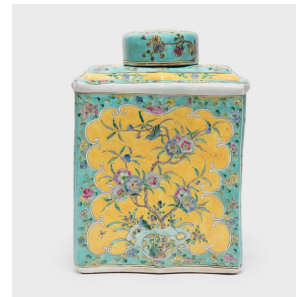
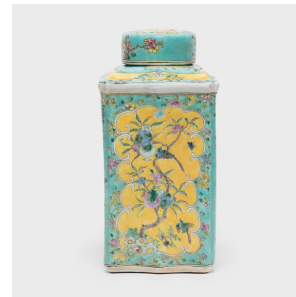

PAGODA RED



FAMILLE ROSE TEA LEAF JAR WITH PLUM BLOSSOMS AND POMEGRANATES

\$680

China • Porcelain • Collection #CFC012B

W: 10.0" D: 7.0" H: 13.75"

Brightly colored in yellow and turquoise, this impressive tea leaf jar is decorated in a style of overglaze enameling known as "famille rose." Sometimes referred to as "yangcai" or "foreign colors," the famille rose style emerged during the 18th century and employs a pastel palette of opaque overglaze enamels that favors roses and pinks. The subtly curving surface of this large tea leaf jar offers the perfect sculptural canvas for its delicate floral design. Continued...



1740 W. Webster Ave., Chicago, IL 60614 • 773-235-1188 • info@pagodared.com

PAGODARED.COM

PAGODA RED

FAMILLE ROSE TEA LEAF JAR WITH PLUM BLOSSOMS AND POMEGRANATES

Enclosed within yellow panels on each side of the jar is a young sapling dotted with flowers - plum blossoms on one side, symbols of longevity, and pomegranate blossoms on the other, symbols of good fortune and perpetuity.



1740 W. Webster Ave., Chicago, IL 60614 • 773-235-1188 • info@pagodared.com

PAGODARED.COM