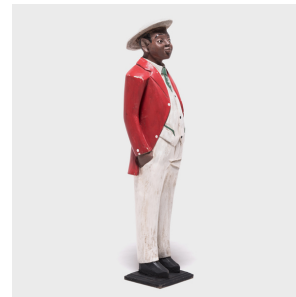
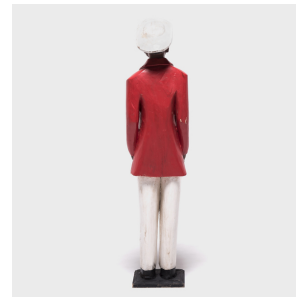

PAGODA RED



COLONIAL FIGURE WITH RED JACKET

\$1,880

c. 1950 • Ivory Coast • Paint, Wood • Collection #CAA1372

W: 10.0" D: 10.5" H: 44.5"

The hats, clothes, and exaggerated features mark this Baule figure as a colonial satire. At the height of European colonization, many African craftspersons made figures that called out the oppressive cultural impositions Europeans brought with them. The vibrant colors and expressive facial features combine with the figure's stature to resist the cultural constraints represented by Western attire. The wide brimmed hat is notable for showing how traditional carvers were adapting their age old styles into the new movement of Colonial Art.



1740 W. Webster Ave., Chicago, IL 60614 • 773-235-1188 • info@pagodared.com

PAGODARED.COM