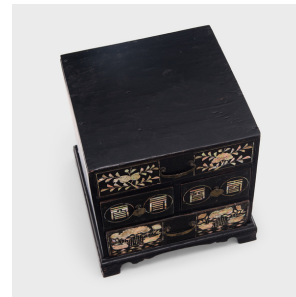
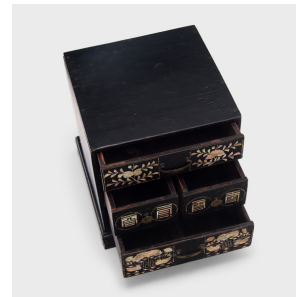

PAGODA RED



MOTHER-OF-PEARL TABLE CHEST

\$980

Early 20th Century • China • Wood, Lacquer, Mother of Pearl • Collection #CFC025

W: 11.0" D: 11.0" H: 11.0"

Dated to the early 20th century, this four-drawer table chest was likely used as a jewelry box and is beautifully decorated with black lacquer inlaid with mother-of-pearl. The top drawer is patterned with elegant floral branches and the bottom drawer with a scene of ducks beneath lotus leaves. The middle drawers each bear two stylized Chinese characters, enclosed as round medallions. A lovely keepsake from a bygone era, this antique jewelry box adds rich texture and timeless beauty to any interior.

Multiple losses to mother-of-pearl inlay.



1740 W. Webster Ave., Chicago, IL 60614 • 773-235-1188 • info@pagodared.com

PAGODARED.COM

PAGODA RED

MOTHER-OF-PEARL TABLE CHEST

Additional Dimensions:

Top Drawer: 8.75"W x 8.75"D x 2.25"H

Middle Drawers: 3.75"W x 8.75"D x 2.25"H

Bottom Drawer: 8.75"W x 8.75"D x 2.25"H



1740 W. Webster Ave., Chicago, IL 60614 • 773-235-1188 • info@pagodared.com

PAGODARED.COM