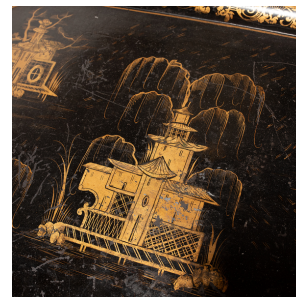


---

# PAGODA RED

---



## CHINOISERIE GILT GARDEN TRAY

**\$580**

c. 1920 • France • Pigment, Lacquer, Metal • Collection #CFC246

W: 29.0" D: 23.0" H: 1.0"

This large metal tray dates to the early 20th century and is decorated with a gold-and-black design in the Chinoiserie style. A black lacquer finish cloaks the rectangular tray on both sides and offers the perfect canvas for a gilt garden landscape. Hand-painted with gold pigments, the idyllic scene depicts a quiet riverbank dotted with towering pagodas and waterside verandas. Tall willow trees flow in the wind as villagers peer out over the waters. The scene is enclosed by an elegant border of clustered florals and trailing vine scrollwork.

From the collection of Frances and Gary Comer.



1740 W. Webster Ave., Chicago, IL 60614 • 773-235-1188 • [info@pagodared.com](mailto:info@pagodared.com)

PAGODARED.COM