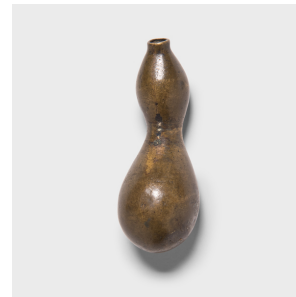
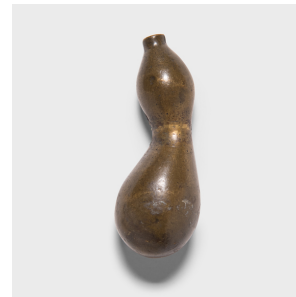
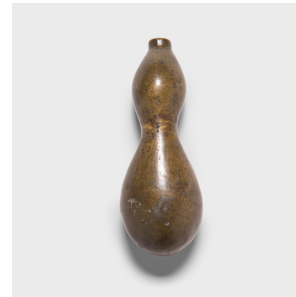


---

# PAGODA RED

---



## JAPANESE DOUBLE GOURD NETSUKE

**\$268**

c. 1850 • Japan • Brass • Collection #AA017

H: 2.0" Dia: 0.75"

In 19th-century Japan, kimono-clad men compensated for the garment's lack of pockets by wearing small pouches secured by button-like fasteners known as netsuke. Although these tiny, fob-like objects had a practical purpose, they were exquisitely crafted of a wide range of materials and become fashionable as treasured accessories. This brass netsuke was shaped to a simple double-gourd form, a symbol of longevity and protection. With a graceful and balanced design, this petite netsuke lives on as a delightful storied object.



1740 W. Webster Ave., Chicago, IL 60614 • 773-235-1188 • [info@pagodared.com](mailto:info@pagodared.com)

PAGODARED.COM