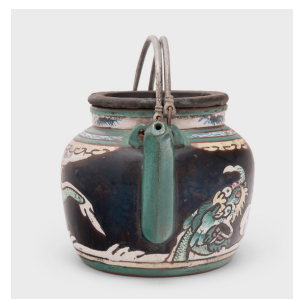
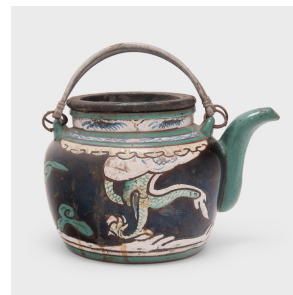
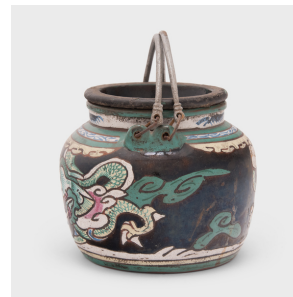

PAGODA RED



ENAMELWARE TEAPOT WITH TWIN DRAGONS

\$480

c. 1900 • China • Ceramic • Collection #CFC128

W: 8.5" D: 6.5" H: 5.5"

Tea drinking has been an integral part of Chinese culture for centuries, resulting in a wide range of social customs and material traditions. In addition to tea leaves, water, and heat, the art of drinking tea (chayi) calls for a variety of teaware and utensils - both practical and decorative.

This rounded teapot dates to the early 20th century and is densely decorated with opaque overglaze enamels in a palette of black, pink, creme and green. The sides are decorated with two dragons soaring through the night sky towards a flaming pearl, an emblem of the sun, of the moon, of balance, and of power. Continued...



1740 W. Webster Ave., Chicago, IL 60614 • 773-235-1188 • info@pagodared.com

PAGODARED.COM

PAGODA RED

ENAMELWARE TEAPOT WITH TWIN DRAGONS

Painted with thick linework, the decoration has an almost cartoonish appearance and is a charming example of a traditional motif.

From the collection of Frances and Gary Comer.



1740 W. Webster Ave., Chicago, IL 60614 • 773-235-1188 • info@pagodared.com

PAGODARED.COM