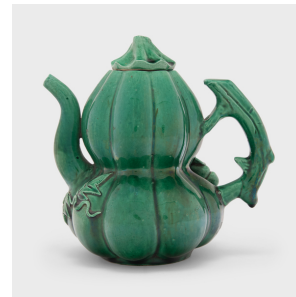
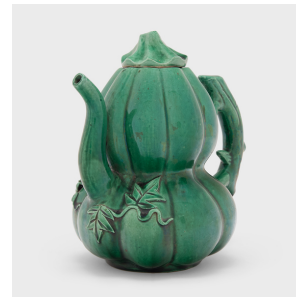
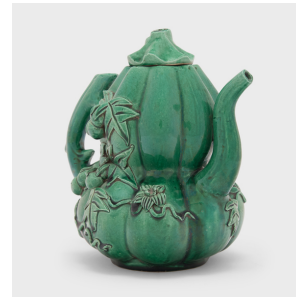


---

# PAGODA RED

---



## GREEN GLAZED DOUBLE GOURD TEAPOT

**\$188**

Late 20th Century • China • Porcelain • Collection #CFC153

W: 7.0" D: 5.5" H: 7.0"

Tea drinking has been an integral part of Chinese culture for centuries, resulting in a wide range of social customs and material traditions. In addition to tea leaves, water, and heat, the art of drinking tea (chayi) calls for a variety of teaware and utensils - both practical and decorative.

This decorative ceramic teapot is shaped in the traditional double gourd form, meant to resemble a calabash, or bottle gourd, a symbol of health, longevity, and good luck. The hourglass shape is decorated with charming detail, including a ribbed texture on the body, a woody stem for a handle, and leafy vines on the sides. Continued...



1740 W. Webster Ave., Chicago, IL 60614 • 773-235-1188 • [info@pagodared.com](mailto:info@pagodared.com)

PAGODARED.COM

---

**PAGODA  
RED**

---

## **GREEN GLAZED DOUBLE GOURD TEAPOT**

The naturalistic design is finished by a beautiful blue-green glaze that evenly coats the teapot with subtle crazing.



1740 W. Webster Ave., Chicago, IL 60614 • 773-235-1188 • [info@pagodared.com](mailto:info@pagodared.com)

**PAGODARED.COM**