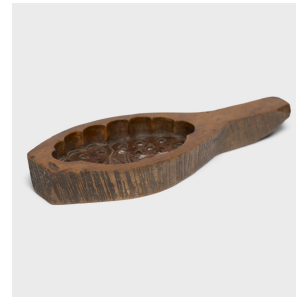

PAGODA RED



LOTUS MOONCAKE MOLD

\$48

c. 1900 • China • Wood • Collection #CLC001A

W: 7.5" D: 3.0" H: 1.0"

This late 19th century hand-held wood press is carved with a large mold used for shaping festive mooncakes. Packed with lotus root, red bean, or other regional fillings, mooncakes are a delicacy eaten during the Mid-Autumn Festival as an offering between friends and family. The mold is carved in relief with two lotus seed pods, a motif of fertility and plentiful offspring. Beautifully aged and full of character, we love this humble kitchen tool as a storied token from the past.



1740 W. Webster Ave., Chicago, IL 60614 • 773-235-1188 • info@pagodared.com

PAGODARED.COM