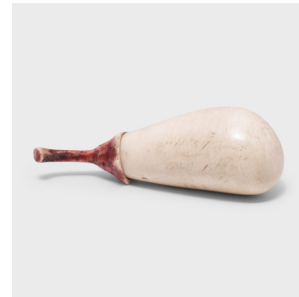


---

# PAGODA RED

---



## IVORY EGGPLANT SNUFF BOTTLE

**\$580**

c. 1850 • China • Ivory • Collection #CFC202

W: 0.75" D: 0.5" H: 2.25"

A mixture of finely powdered tobacco, herbs, and spices, snuff was introduced to China in the 17th century by Western diplomats. Initially reserved for ranking members of Qing-dynasty society, the practice provided an opportunity to display one's refined aesthetic through collectible snuff bottles.

Reminiscent of a Japanese netsuke, this petite snuff bottle is hand-carved of ivory in the shape of an eggplant or aubergine. Full of character, the tiny bottle is comprised of a pear-shaped body and a screw top that has been carved and stained to resemble a leafy stem. Continued...



1740 W. Webster Ave., Chicago, IL 60614 • 773-235-1188 • [info@pagodared.com](mailto:info@pagodared.com)

PAGODARED.COM

---

# PAGODA RED

---

## IVORY EGGPLANT SNUFF BOTTLE

Because of the stem's resemblance to an official's hat, the eggplant is associated with success and prosperity, making this a fitting gift for the high achiever in your life.

Original snuff spoon has been lost.

From the collection of Frances and Gary Comer.

Not available to ship outside Illinois. Please call at 888-878-8628 for further information.

