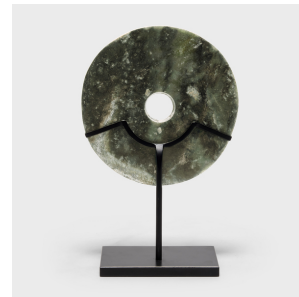
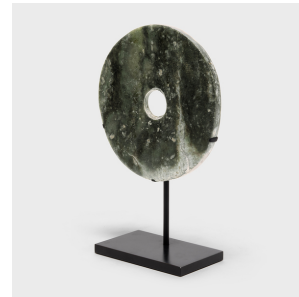

PAGODA RED



JADE BI DISC

\$1,080

c. 1850 • China • Jade, Steel • Collection #CBH104C

W: 8.0" D: 3.5" H: 12.25"

Found in the tombs of ancient Chinese emperors and aristocrats, bi discs such as this have a mysterious and spiritual history, and their function and significance remain uncertain. Shaping this hard stone takes considerable skill. An artisan patiently rubs the surface with sand to give the stone its soft, satiny appearance, a subtle glow completely different from the polished gloss of machine-finished stones. Set on a custom metal stand, this petite jade bi disc anchors interiors with beautiful dark color and dense texture.



1740 W. Webster Ave., Chicago, IL 60614 • 773-235-1188 • info@pagodared.com

PAGODARED.COM