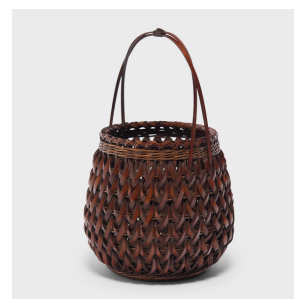
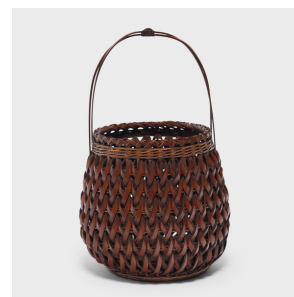
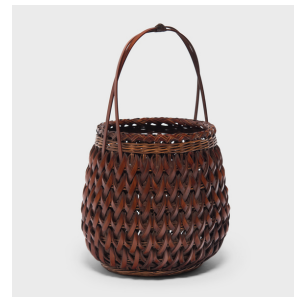

PAGODA RED



JAPANESE BAMBOO IKEBANA BASKET

\$1,880

c. 1900 • Japan • Smoked Bamboo • Collection #CMK100

H: 15.5" Dia: 9.5"

This one-of-a-kind bamboo basket is a late-Meiji era flower basket (hanakago) designed especially for ikebana, the Japanese art of floral arrangement. Woven of smoked bamboo (susutake), the basket has a rounded, barrel form surmounted by a high, arched handle.

The body of the basket has a plaited appearance, comprised of wide strips twisted around a straight weave framework. The flat base is woven in a chrysanthemum pattern (kikuzokko ami) and the delicate handle is comprised of two thin strips secured by an elegant knot. Used to contrast and anchor delicate flowers, this ikebana basket adds rich texture and form to any space. Continued...



1740 W. Webster Ave., Chicago, IL 60614 • 773-235-1188 • info@pagodared.com

PAGODARED.COM

**PAGODA
RED**

JAPANESE BAMBOO IKEBANA BASKET

Additional Dimensions:

Diameter of opening: 7.



1740 W. Webster Ave., Chicago, IL 60614 • 773-235-1188 • info@pagodared.com

PAGODARED.COM