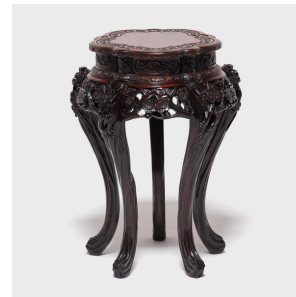
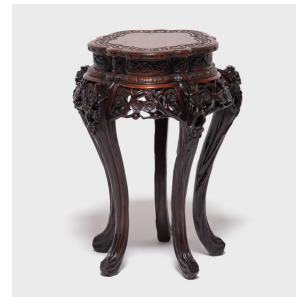


---

# PAGODA RED

---



## JAPANESE ROSEWOOD TABLE

**\$2,980**

c. 1850 • Japan • Rosewood • Collection #BTF033

H: 26.25" Dia: 18.5"

The growth of urban centers and spread of wealth during the Edo period in Japan ushered in an era that reveled in the aesthetic qualities of objects and actions in everyday life. This ornately carved table from 1850 demonstrates the level of pleasure and luxury pursued by the wealthy. Exquisitely crafted from prized rosewood, the table curves a scalloped tabletop. This floral-inspired shape echoes throughout the apron in a profusion of intricate vines and flowers. The botanic theme takes an organic turn in the five dramatically curved legs that are carved to mimic natural wood grain. Continued...



1740 W. Webster Ave., Chicago, IL 60614 • 773-235-1188 • [info@pagodared.com](mailto:info@pagodared.com)

PAGODARED.COM

---

# PAGODA RED

---

## JAPANESE ROSEWOOD TABLE

Bring the opulence of Japan's "floating world" to a bedroom or sitting room with this remarkably preserved antique.



1740 W. Webster Ave., Chicago, IL 60614 • 773-235-1188 • [info@pagodared.com](mailto:info@pagodared.com)

PAGODARED.COM