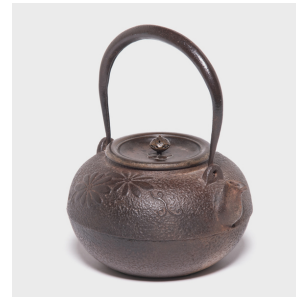

PAGODA RED



JAPANESE TETSUBIN WITH CHRYSANTHEMUM BLOSSOMS

\$980

c. 1900 • Japan • Iron, Bronze • Collection #CCB007

W: 7.25" D: 6.5" H: 8.75"

Decorated with stylized chrysanthemum blossoms, symbols of longevity and rejuvenation, this Japanese teapot was used to boil water for traditional tea ceremonies. Known as tetsubin, the kettle's cast-iron construction is said to change the quality of the water, making tea taste mellow and sweet. Made by pouring iron into clay or sand molds, the kettle has a rustic texture in pleasing contrast to its elegant, arched handle and intricately incised lid. Continued...



1740 W. Webster Ave., Chicago, IL 60614 • 773-235-1188 • info@pagodared.com

PAGODARED.COM

PAGODA RED

JAPANESE TETSUBIN WITH CHRYSANTHEMUM BLOSSOMS

The lid is signed by the artisan who crafted the kettle during Japan's Meiji period, an era when artisans began introducing elements of modern Western design into traditional forms.



1740 W. Webster Ave., Chicago, IL 60614 • 773-235-1188 • info@pagodared.com

PAGODARED.COM