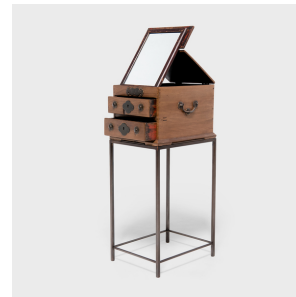
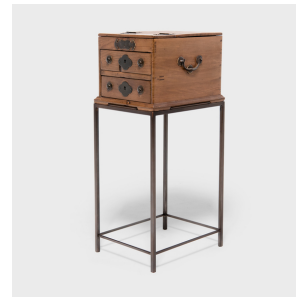
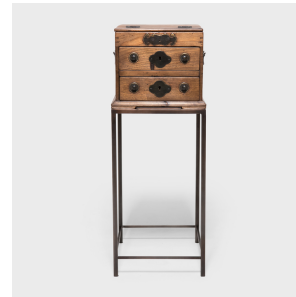


---

# PAGODA RED

---



## IMMORTALITY JEWELRY BOX TABLE

**\$1,680**

c. 1900 • Jiangsu, China • Steel, Birch • Collection #BJD137

W: 9.5" D: 12.5" H: 28.0"

Long ago, this charming little box adorned was used by a Qing-dynasty lady to store her favorite pieces of jewelry, each drawer filled with jades, pearls, coral necklaces, and hair pins. Crafted of birch wood, the box has two shallow drawers and opens to reveal a rectangular mirror and hidden compartment. The front is topped by a brass lock in the shape of two lingzhi mushrooms, symbols of immortality, and a quadrilobe lock decorates each drawer below. We've re-imagined this jewelry box as a petite side table, elevated by a custom steel table base.



1740 W. Webster Ave., Chicago, IL 60614 • 773-235-1188 • [info@pagodared.com](mailto:info@pagodared.com)

PAGODARED.COM