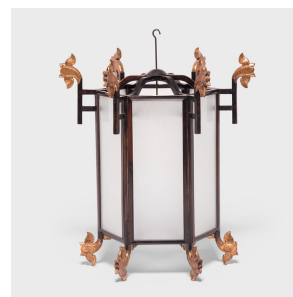
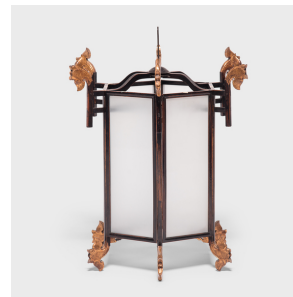
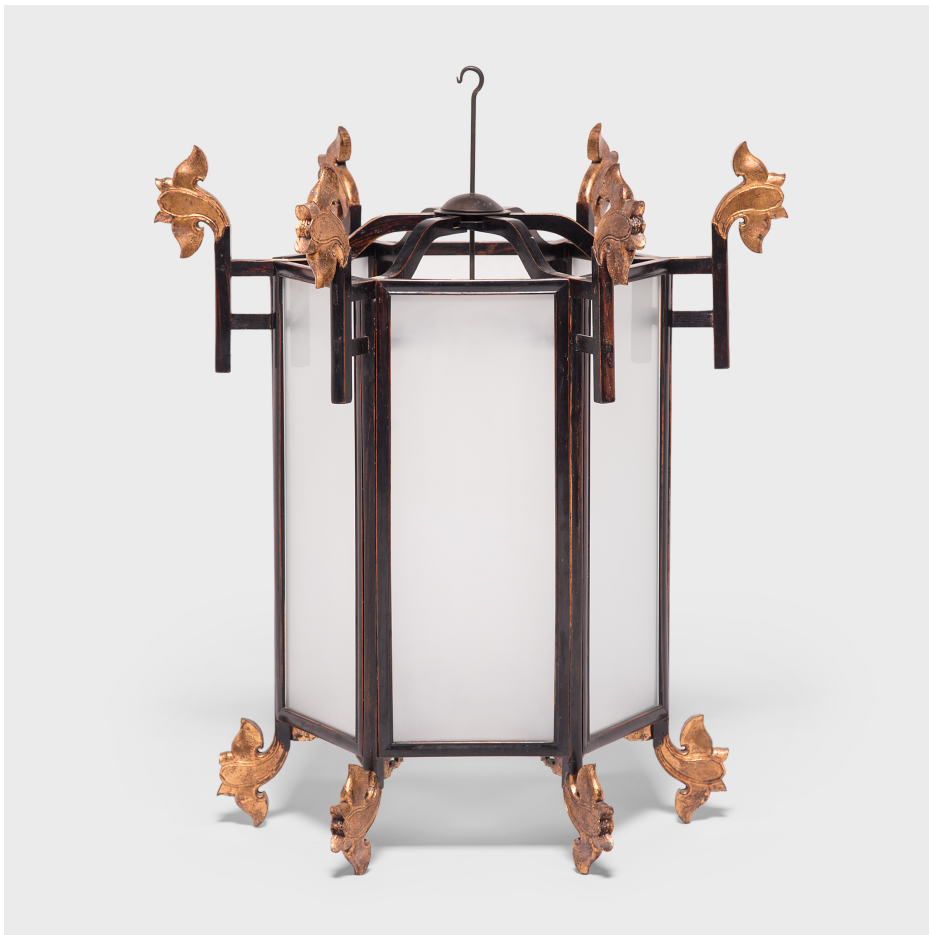

PAGODA RED



LANTERN WITH GILT LOTUS FINIALS

\$3,480

c. 1900 • Northern China, China • Pigment, Northern Elmwood, Glass • Collection #GDB025D

W: 26.25" D: 26.25" H: 33.0"

Embellished with carved and gilded lotus flowers, this ornate Chinese lantern would have originally been lit with candles to illuminate a very fine courtyard home in Northern China. Chinese lanterns have a history that goes back over 1,800 years to the Han Dynasty: during the Lantern Festival (which falls on the 15 day of the first lunar month) people hang lanterns to symbolize finding a fresh start. Each of the frosted glass panels framed in lacquered elm are detachable and fit precisely in the lotus frame like a puzzle. The frame folds flat when the panels are removed. Continued...



1740 W. Webster Ave., Chicago, IL 60614 • 773-235-1188 • info@pagodared.com

PAGODARED.COM

**PAGODA
RED**

LANTERN WITH GILT LOTUS FINIALS

The lantern can be hardwired by a certified electrician and professionally installed.



1740 W. Webster Ave., Chicago, IL 60614 • 773-235-1188 • info@pagodared.com

PAGODARED.COM