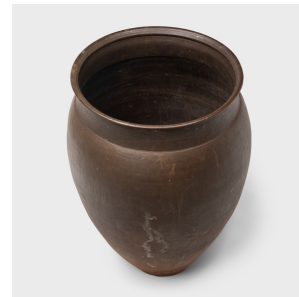


---

# PAGODA RED

---



## MONUMENTAL JAPANESE SAKE VESSEL

**\$3,280**

c. 1850 • Japan • Stoneware • Collection #CDANT001

H: 47.5" Dia: 33.0"

This elegant, large-scale vessel is a Japanese widemouth stoneware jar (kame) traditionally used for storing water and other liquids. This 19th-century example continues traditional forms and was likely used as a fermentation vessel in the production of sake. The large ceramic form was built up in sections using the coiled technique and has a dramatically tapered form with a narrow base, rounded shoulders and a flared lip. The jar is left undecorated, finished only by a thin, hand-applied glaze of neutral brown color and matte texture.



1740 W. Webster Ave., Chicago, IL 60614 • 773-235-1188 • [info@pagodared.com](mailto:info@pagodared.com)

PAGODARED.COM

---

# PAGODA RED

---

## MONUMENTAL JAPANESE SAKE VESSEL

Additional Dimensions:

Diameter of Opening: 25"



1740 W. Webster Ave., Chicago, IL 60614 • 773-235-1188 • [info@pagodared.com](mailto:info@pagodared.com)

PAGODARED.COM