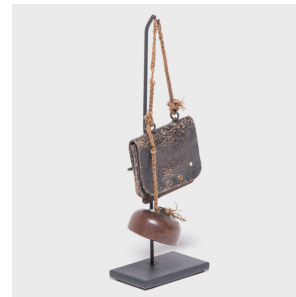
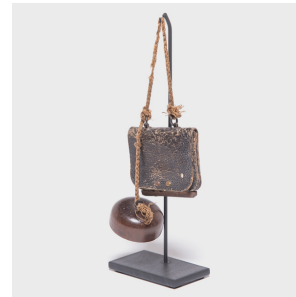


---

# PAGODA RED

---



## JAPANESE LEATHER TOBACCO POUCH AND NETSUKE

**\$780**

c. 1900 • Japan • Wood, Brass, Steel, Leather • Collection #AA005

W: 3.0" D: 1.75" H: 8.75"

Created in the late 19th century during Japan's Meiji period, this petite leather tobacco pouch is accompanied by a small, wooden netsuke charm. Because traditional Japanese clothing didn't have pockets, men and women carried their belongings in pouches attached to their belts. Beautifully crafted pouches such as this became fashionable accessories and were frequently given as gifts. This well-preserved tobacco pouch is trimmed with brass fittings and house have been a highly desirable status symbol. Continued...



1740 W. Webster Ave., Chicago, IL 60614 • 773-235-1188 • [info@pagodared.com](mailto:info@pagodared.com)

PAGODARED.COM

---

**PAGODA  
RED**

---

## **JAPANESE LEATHER TOBACCO POUCH AND NETSUKE**

Suspended on a custom steel mount, the pouch and netsuke live on as a sculptural object with storied history.



1740 W. Webster Ave., Chicago, IL 60614 • 773-235-1188 • [info@pagodared.com](mailto:info@pagodared.com)

**PAGODARED.COM**