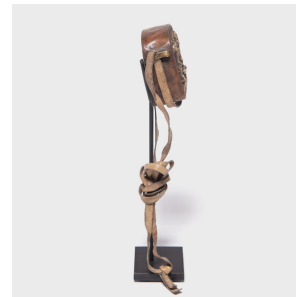
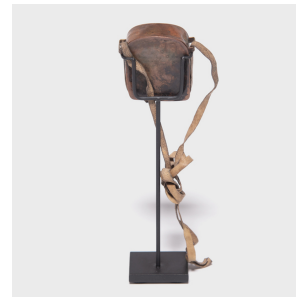
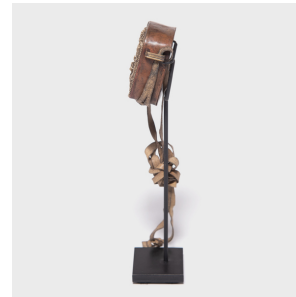

PAGODA RED



MINIATURE TIBETAN TRAVELING SHRINE

\$428

c. 1900 • Tibet • Brass, Steel, Leather • Collection #BJBB041

W: 2.25" D: 1.5" H: 7.5"

Tibetan traveling shrines, known as gau, were believed to offer protective powers and were used to hold and carry sacred objects during long journeys. Crafted over a century ago, a Buddhist follower may have purchased this intricate gau while on a religious pilgrimage to a temple or holy site. It is decorated in repoussé of exquisitely formed auspicious symbols, with a central panel depicting a hand-formed Buddha. Followers would often donate the shrines to the temple as an expression of their religious devotion, or take them home as mementos of their journey. Continued...



1740 W. Webster Ave., Chicago, IL 60614 • 773-235-1188 • info@pagodared.com

PAGODARED.COM

PAGODA RED

MINIATURE TIBETAN TRAVELING SHRINE

This traveling shrine is mounted on a custom steel stand.



1740 W. Webster Ave., Chicago, IL 60614 • 773-235-1188 • info@pagodared.com

PAGODARED.COM