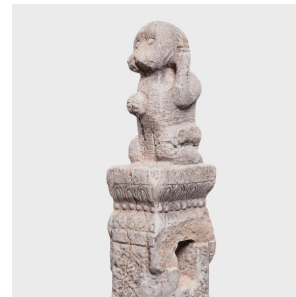


---

# PAGODA RED

---



## MONKEY HITCHING POST

**\$7,480**

c. 1850 • Shanxi, China • Limestone • Collection #ZZZ025

W: 6.0" D: 8.0" H: 97.0"

Created in the mid-19th century, this charming limestone post likely once stood outside a building in China's Shanxi province as a spot to hitch livestock. Carved in reference to the Ming-dynasty novel "Journey to the West," the monkey atop the post depicts Sun Wukong, the Monkey King who eats from the heavenly peach garden to obtain immortality. Despite his divine status, the Monkey King is depicted with charming naturalism, wide-eyed and cradling the prized fruit in its hands. Continued...



1740 W. Webster Ave., Chicago, IL 60614 • 773-235-1188 • [info@pagodared.com](mailto:info@pagodared.com)

PAGODARED.COM

---

# PAGODA RED

---

## MONKEY HITCHING POST

Intended as a protective talisman for horses, we love the idea of nestling the sculpture in a shady corner of a garden, guarding the home with a watchful eye.

