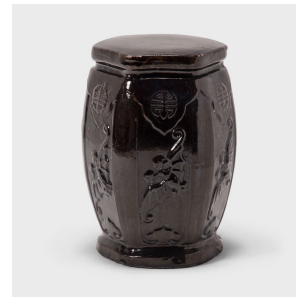
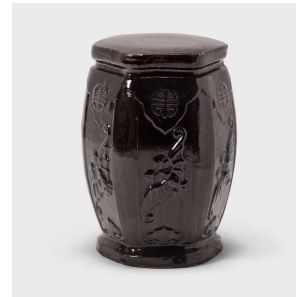

PAGODA RED



NOIR GARDEN TABLE

\$1,880

c. 1900 • Hebei, China • Ceramic • Collection #BJGG051D

H: 19.5" Dia: 12.0"

This early 20th-century garden stool from China's Hebei province has the proportions of a traditional drum-form stool, but its hexagonal shape and waisted ends make it an unusual find. Although the dark glaze appears perfectly even from afar, a closer look reveals its heavily crazed and beautifully irregular texture. The dark brown glaze spills over panels decorated in low relief, depicting a bat, a symbol of happiness, and the shou symbol for longevity. Traditionally used as a place to rest one's feet, a stool like this is perfect as a garden seat or a small side table indoors or out.



1740 W. Webster Ave., Chicago, IL 60614 • 773-235-1188 • info@pagodared.com

PAGODARED.COM