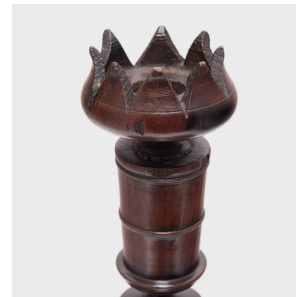
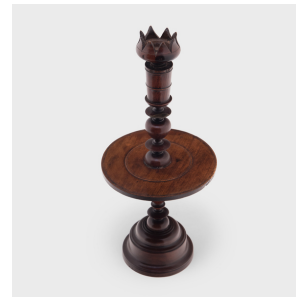
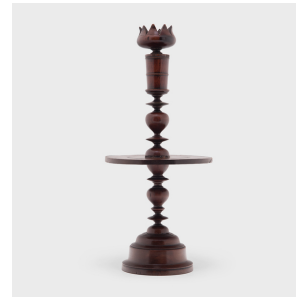

PAGODA RED



PAIR OF TURNED WOOD CANDLE STANDS

\$880

c. 1900 • Europe • Wood • Collection #CFC552

H: 18.0" Dia: 8.0"

This lovely pair of turned wood candlesticks were crafted in the late 19th century in the style of Georgian or Victorian woodworking. A delicate eight-petal lotus-form dish tops each stand, carved with a round opening sized for a taper candle. The stem is shaped by a sculptural pattern of turned nodes and ends in a domed base. A wide drip tray interrupts the sculptural forms, gently warped from age and use.

The lotus-form dish on one of the candle stands is missing a petal. One base has a split to the wood.



1740 W. Webster Ave., Chicago, IL 60614 • 773-235-1188 • info@pagodared.com

PAGODARED.COM

PAGODA RED

PAIR OF TURNED WOOD CANDLE STANDS

Additional Dimensions:

Diameter of Base: 5.25"

Diameter of Candle Spot: 1"



1740 W. Webster Ave., Chicago, IL 60614 • 773-235-1188 • info@pagodared.com

PAGODARED.COM