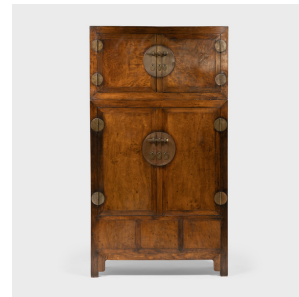


---

# PAGODA RED

---



## PAIR OF CAMPHOR BURL COMPOUND CABINETS

**\$58,000**

c. 1850 • Northern China, China • Camphor • Collection #CMCL099

W: 56.5" D: 22.25" H: 102.5"

These refined Qing-dynasty compound cabinets command their surroundings with grand scale and fine materials. Constructed of camphor with traditional joinery, the tall cabinets are comprised of two separate, stacked storage compartments. The upper compartment was traditionally used for hats or out of season clothes while the lower cabinet stored bedding and everyday garments.

The elegant cabinets boast a minimal design that highlights the inherent beauty of the rare materials. The doors are faced with gorgeous cuts of burl wood, each with swirling grain patterns and shimmering golden color. Continued...



1740 W. Webster Ave., Chicago, IL 60614 • 773-235-1188 • [info@pagodared.com](mailto:info@pagodared.com)

PAGODARED.COM

---

# PAGODA RED

---

## PAIR OF CAMPHOR BURL COMPOUND CABINETS

Simple full moon brass hinges and lock plates accent the fronts with a metallic sheen, perfectly punctuating the warmth and fine texture of camphor.

Deaccessioned from the MacLean Collection of Asian Art.

Some fading due to sun exposure. Some restoration to cabinet back and sides.

Additional Dimensions:

Lower Cabinet: 72.

