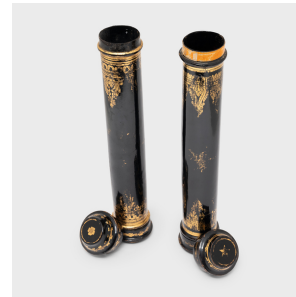

PAGODA RED



PAIR OF GILT BLACK LACQUER SCROLL CASES

\$480

c. 1900 • Thailand • Bamboo, Lacquer • Collection #CFC107

H: 14.5" Dia: 2.25"

Made of bamboo and delicately lacquered in gold and black these early 20th century Thai scroll cases were an essential accessory for any esteemed scholar. The perfect size for a rolled-up scroll, the cases were once used to store and protect works of traditional calligraphy and landscape painting.

The matching cases are decorated in floral meanders across the top and bottom, fading into a rich black center. Amid the scrollwork flourishes are lotus flowers, symbols of purity and enlightenment and lidded ends finished with a star and a flower embellishment. Continued...



1740 W. Webster Ave., Chicago, IL 60614 • 773-235-1188 • info@pagodared.com

PAGODARED.COM

PAGODA RED

PAIR OF GILT BLACK LACQUER SCROLL CASES

This pair showcases an artful display of artisanal craftsmanship, an easy way to add character and storied charm to any home or office.

From the collection of Frances and Gary Comer.



1740 W. Webster Ave., Chicago, IL 60614 • 773-235-1188 • info@pagodared.com

PAGODARED.COM