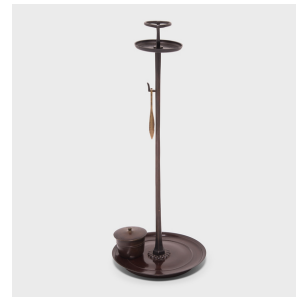
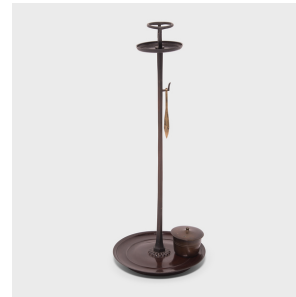


---

# PAGODA RED

---



## PAIR OF JAPANESE SHOKUDAI CANDLE STAND WITH WICK BOX AND PINCHERS

**\$2,980**

c. 1850 • Japan • Bronze, Metal • Collection #CCB003

H: 27.5" Dia: 11.0"

Impeccably cast in a bronze alloy, this pair of mid-19th century shokudai, or candle stands, is a spectacular example of traditional Japanese metalwork. The well-proportioned shokudai stand quite tall, stabilized by heavy bronze base plates. Each rod is secured by a chrysanthemum form base, and at the top, the pricket emerges from a traditional shallow dish with accompanying ring guards. Wick-tending pinchers hang from a small hook on the rod's side, and a bronze-cast wick box rests neatly on the wide base. Continued...



1740 W. Webster Ave., Chicago, IL 60614 • 773-235-1188 • [info@pagodared.com](mailto:info@pagodared.com)

**PAGODARED.COM**

---

# PAGODA RED

---

## PAIR OF JAPANESE SHOKUDAI CANDLE STAND WITH WICK BOX AND PINCHERS

An unusual find, these candle stands are a wonderful tabletop accessory for a console table or sideboard.



1740 W. Webster Ave., Chicago, IL 60614 • 773-235-1188 • [info@pagodared.com](mailto:info@pagodared.com)

PAGODARED.COM